

BGEC

Brunei – Guangxi Economic Corridor

文莱 - 广西经济走廊

Contact Information 联系方式



Energy and Industry Department Prime Minister's Office

Jalan Perdana Menteri
Bandar Seri Begawan BB3913
Brunei Darussalam
T: +673 8111 385 | F: +673 2221 080



SQW China Limited

Hong Kong 香港

12th Floor, Yue On Commercial Building
385-387 Lockhart Road, Hong Kong
香港湾仔骆克道385-387号裕安商业大厦12楼
T: +852 2366 8160 | F: +852 2366 9316

Brunei 文莱

CSPS Building, Simpang 347
Jalan Pasar Baru, Gadong BE1318
Brunei Darussalam
T: +673 2445 841, +673 2445 842

China 中国

No 9, Hezuo Road, Qingxiu District
Nanning City
南宁市青秀区合作路9号

sqwchinagroup.com >

Copyright 版权

©2016 SQW China Limited. All rights reserved. This material may not be reproduced, displayed, modified or distributed without the express prior written permission of the copyright holder. For permission, contact SQW China Limited.

Disclaimer 免责声明

This document is provided for general information only and nothing contained in the material constitutes a recommendation for the purchase or sale of any asset.

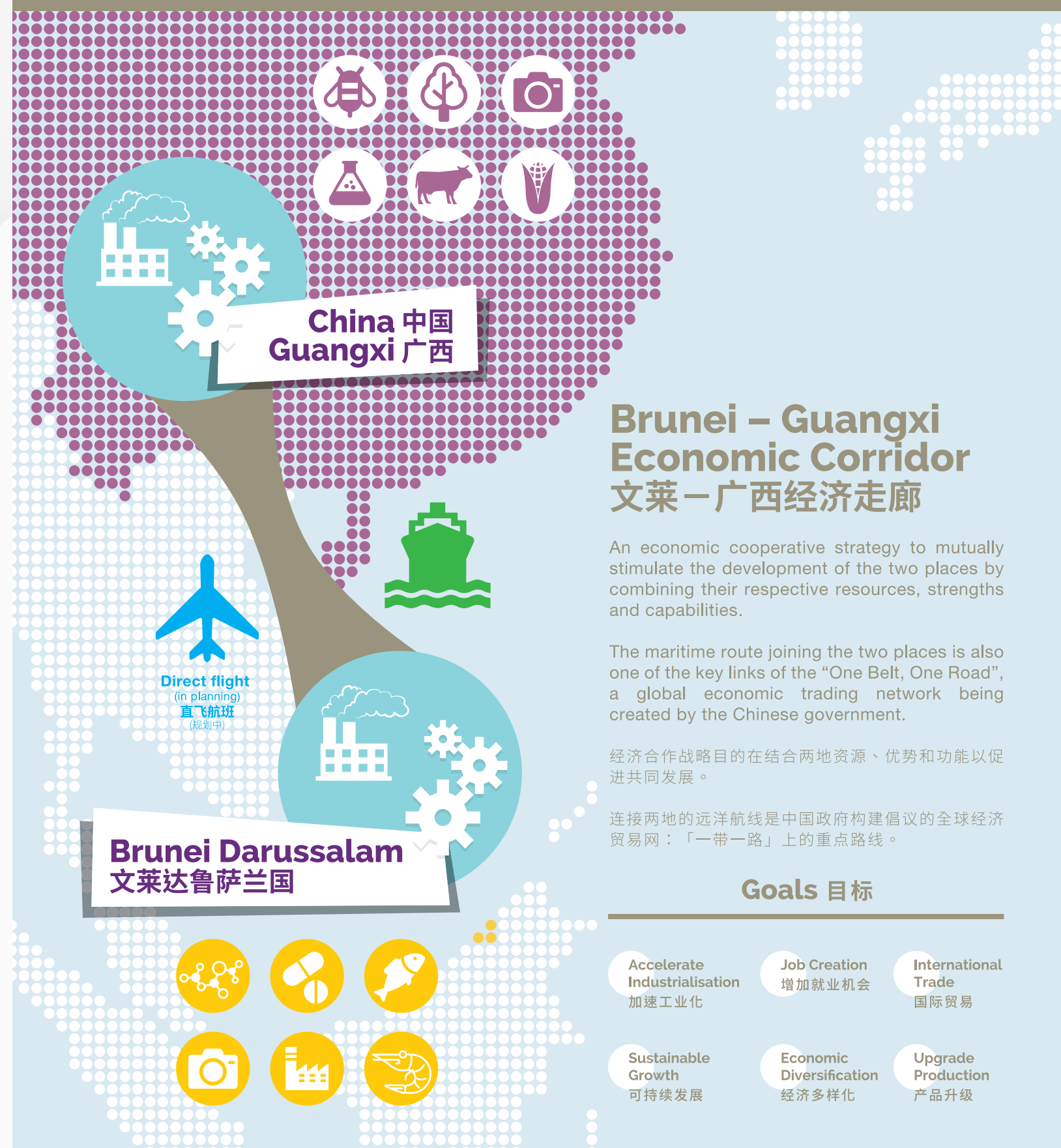
Although the statements of fact in this document are obtained from sources that SQW China Limited considers reliable, we do not guarantee their accuracy and any such information may be incomplete or condensed.

Also views expressed in this document are based on research materials available from source considered reliable. Views are subject to changes on the basis of additional or new research, new facts or developments. The investment risks are not purported to be exhaustive, any interested parties should seek independent advice on the suitability.

BGEC

Brunei – Guangxi Economic Corridor

文莱 - 广西经济走廊



Brunei – Guangxi Economic Corridor 文莱 - 广西经济走廊

An economic cooperative strategy to mutually stimulate the development of the two places by combining their respective resources, strengths and capabilities.

The maritime route joining the two places is also one of the key links of the “One Belt, One Road”, a global economic trading network being created by the Chinese government.

经济合作战略目的在结合两地资源、优势和功能以促进共同发展。

连接两地的远洋航线是中国政府构建倡议的全球经济贸易网：「一带一路」上的重点路线。

Goals 目标

Accelerate Industrialisation
加速工业化

Job Creation
增加就业机会

International Trade
国际贸易

Sustainable Growth
可持续发展

Economic Diversification
经济多样化

Upgrade Production
产品升级

BGEC 文莱 - 广西经济走廊

Brunei – Guangxi Economic Corridor

Key Locations 重要地区

Brunei: BioInnovation Corridor (BIC), other Industrial Sites and Parks in Brunei, Muara Port and other transport facilities.

Guangxi: Nanning City, nearby towns, Qinzhou Port and its linkages to the rest of China

文莱：生物创新走廊(BIC)，文莱的工业园区及穆阿拉港，交通设施。

广西：南宁市及附近的村镇、钦州港连接中国其他地方

Defining Features 主要特色

- Co-location for production and export
- Joint-Ventures with Chinese and/or Brunei companies
- Integrated logistics development and management
- Export target: Global - with focuses on ASEAN, Middle East and Europe.

- 两地双互建设生产和出口的「双定位」设施
- 开办中一文合资企业
- 发展与管理一体化的物流服务
- 出口目标市场：全球 - 重点在东盟国家，中东及欧洲。

Business Sectors 业务领域

- Processed food products
- Pharmaceuticals
- Traditional Chinese Medicine
- Cosmetics & Biotech
- Healthcare & health product

- 食品加工
- 传统中医药
- 医疗和保健品
- 制药
- 化妆品和生物技术产品



Halal-compliance 清真认证



- All products will be Brunei Halal compliance
- If possible, exports will also comply with the stricter Brunei Halal requirements for product quality

- 所有产品必须达到文莱清真标准
- 如可能，出口的产品也必须严格遵守文莱清真产品品质

One Belt, One Road 一带一路

The connection between Brunei Darussalam – Qinzhou would form part of the wider network of the “One Belt, One Road”.

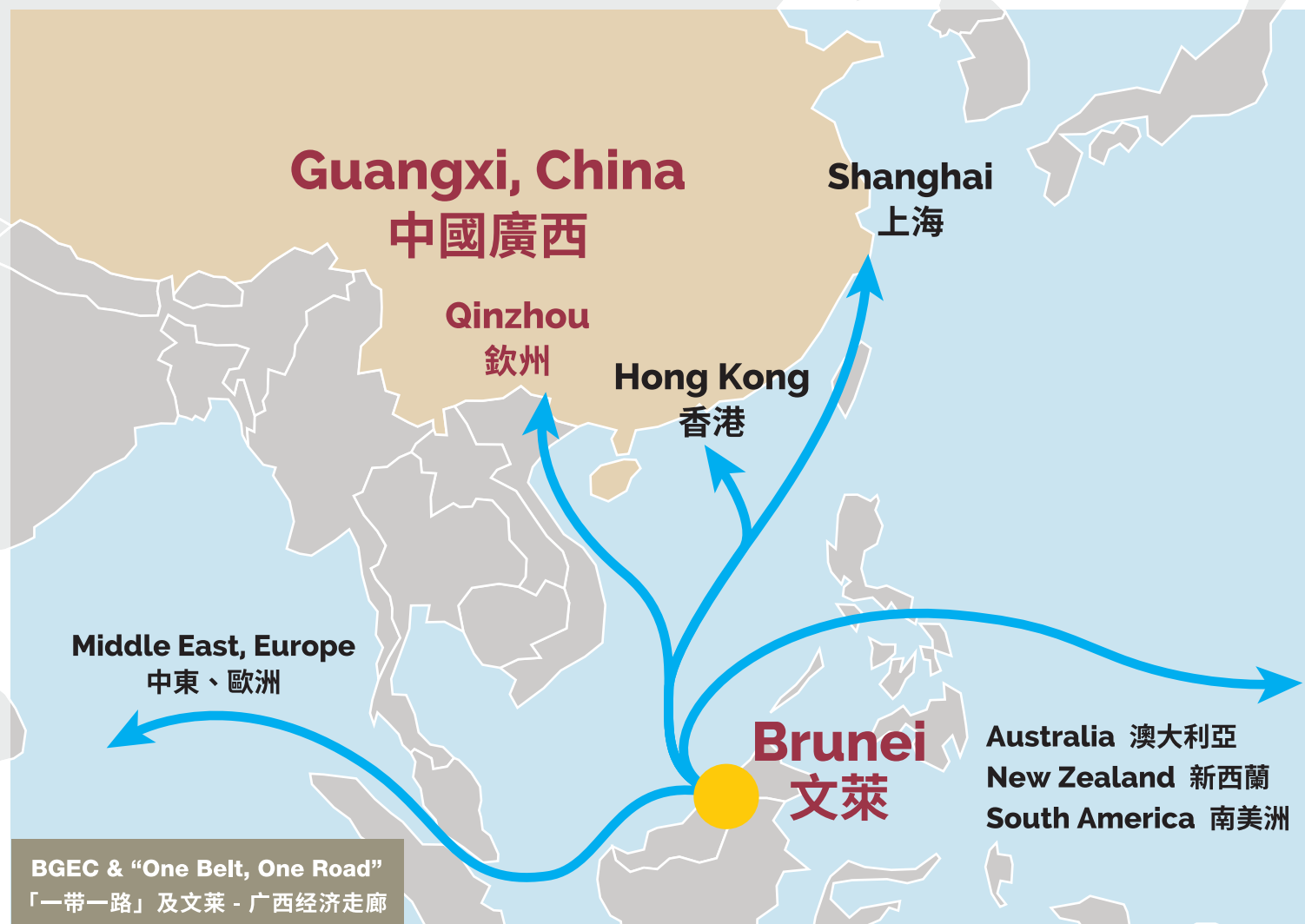
Investment

- Foreign investors have priority to move in
- Possibility for 100% foreign ownership
- Competitive utilities, rent, port facilities rates
- Priority processing of bureaucratic services

文莱与广西钦州航线将成为「一带一路」的路线之一。

投资优惠

- 外国投资者有优先进驻园区权
- 外资控股可达100%
- 具竞争力的水电公用设施、租赁、港口设施建设收费
- 享受政府优先服务



Brunei offers opportunities to explore pristine rainforest and excellent coastlines, as well as unparalleled diving sites.

Most coral reefs in Brunei are rich coral fauna, high coral cover and a mixture of fish life. Brunei is also well catered for bird watching in a variety of habitats.

On land, there are plenty of cultural sites to visit - like Kampong Ayer - one of the oldest settlement in Southeast Asia.

探索文莱原始雨林和世外桃源一般的海岸线，以及无与伦比的潜水胜地。

在文莱珊瑚礁中含有丰富的珊瑚群与高覆盖的热带鱼类混合生活礁群，同时文莱也提供了很好的栖息地满足各种季候鸟，因此亦是观鸟的好地方。

在市内，亦有很多文化遗址可参观 - 像甘榜艾尔 - 东南亚地区最古老的水上村落之一。

Advantages 优势



Brunei Advantages 文莱优势

- Halal Certification and the Brunei Halal brand
- Favourable trade agreements
- British Common Law and institutional quality
- Gateway to Borneo Island (Sabah, Sarawak, Kalimantan)

- 清真认证和文莱清真品牌
- 优惠的贸易协议
- 实行英国普通法和行政体系
- 通往婆罗洲岛(沙巴、沙捞越、加里曼丹)的门户



Guangxi Advantages 广西优势

- Better labour cost and availability
- Land availability for agricultural and industrial production
- Technological knowledge from state enterprises
- Stronger logistical capacity for export

- 劳动力充足且成本低和丰富的资源
- 拥有大面积生产用地
- 国有企业提供的技术支持
- 强大的物流和出口能力